

Svensk Dagfjärilsövervakning

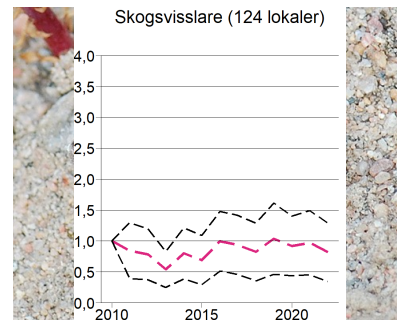
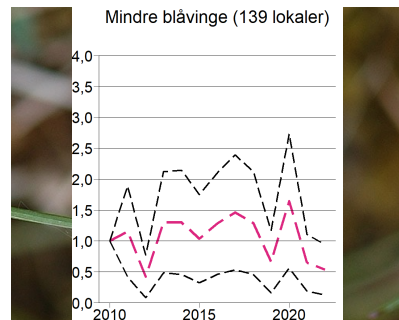
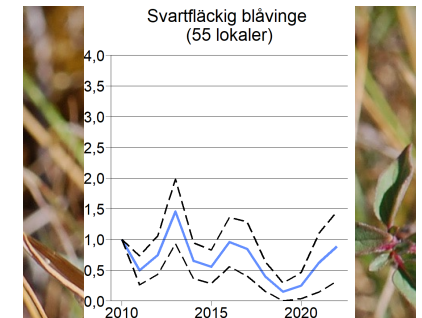
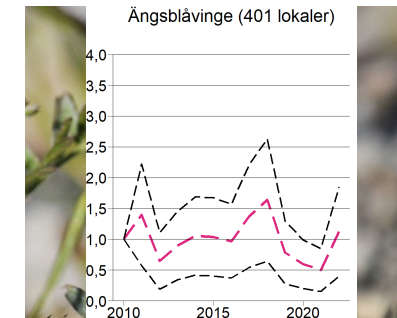
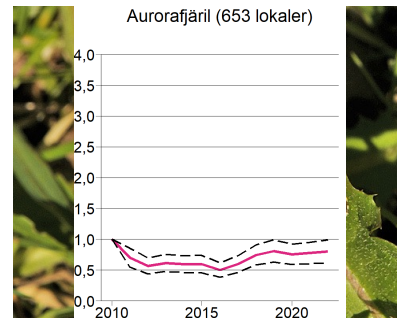
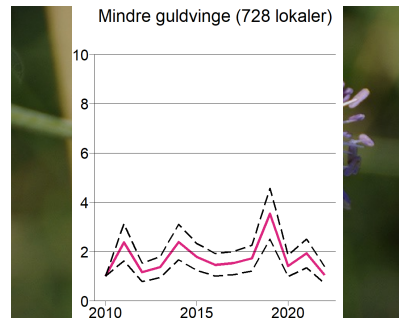
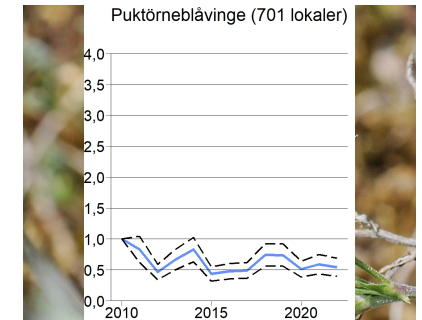
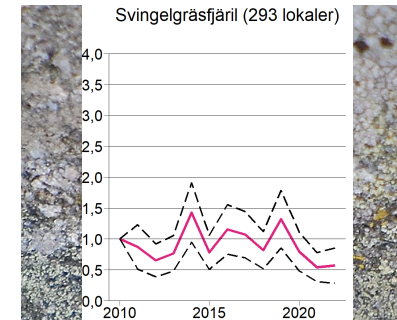
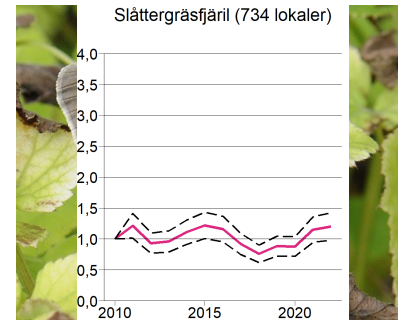
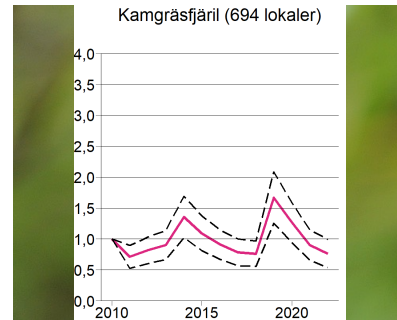
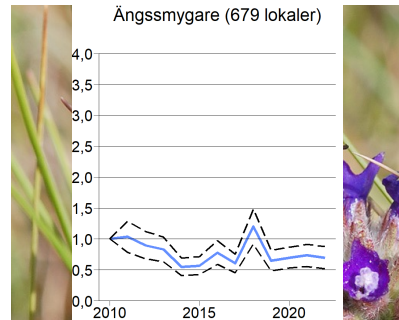
- Del av Naturvårdsverkets miljöövervakning
- Standardiserade metoder
- Under 2022
 - » Ca 290 fjärilsräknare
 - » Ca 510 lokaler
- 22 länder i Europa



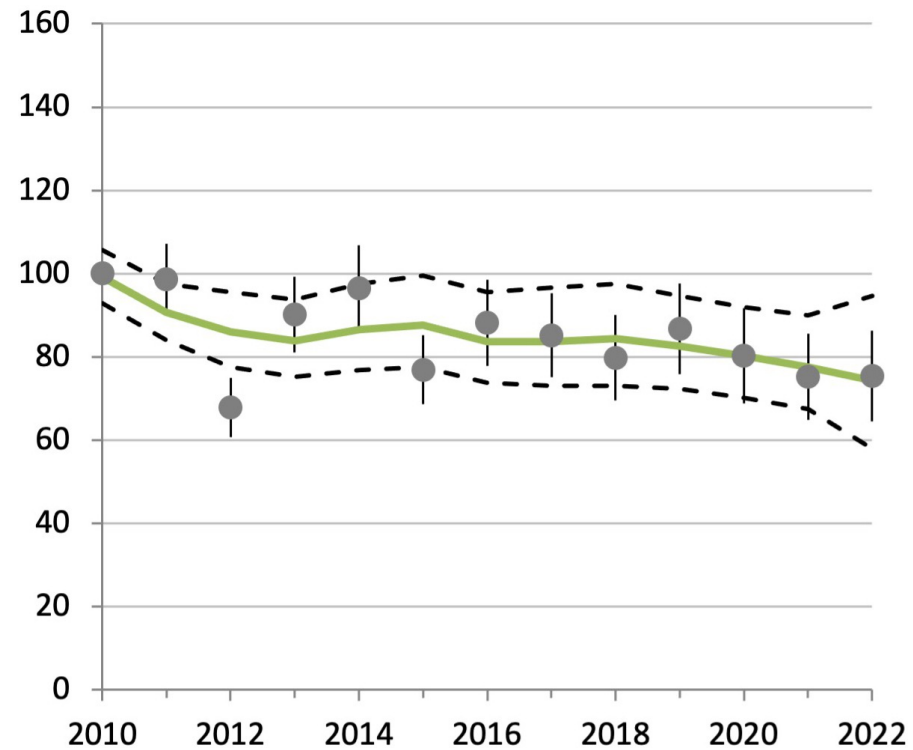
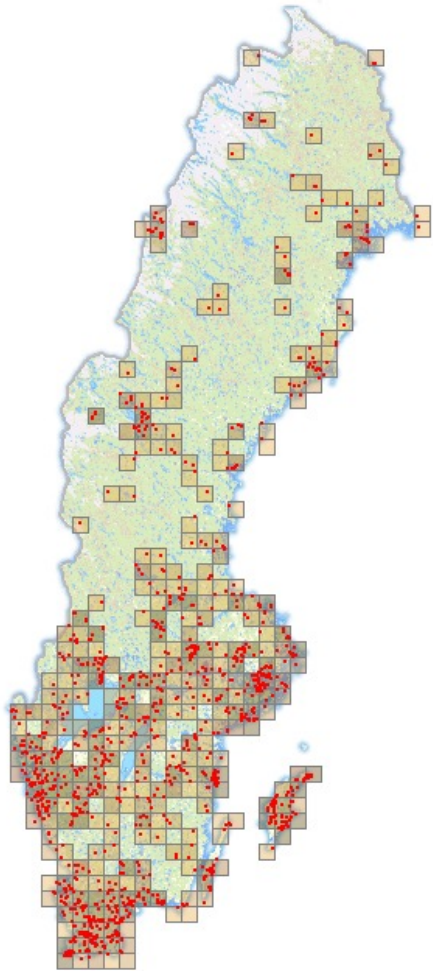
Trender för arter, även inom habitat & regioner



Trender för arter, även inom habitat & regioner



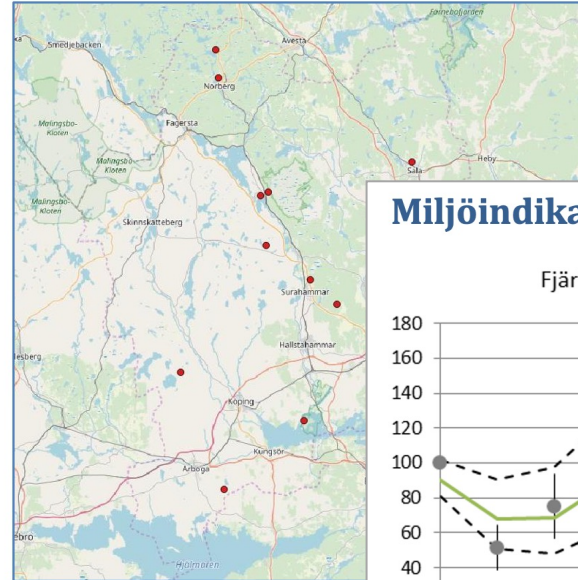
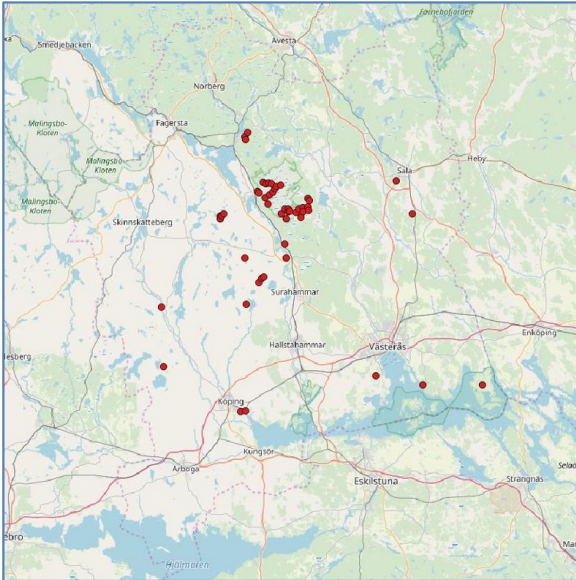
European Grassland Butterfly Indicator, Sverige



Del av statusindikatorn
"Fåglar och fjärilar i
odlingslandskapet"

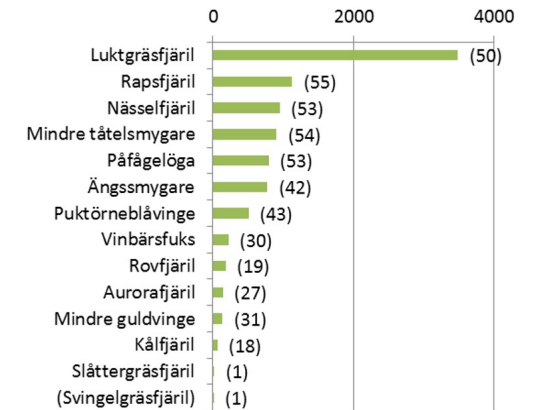
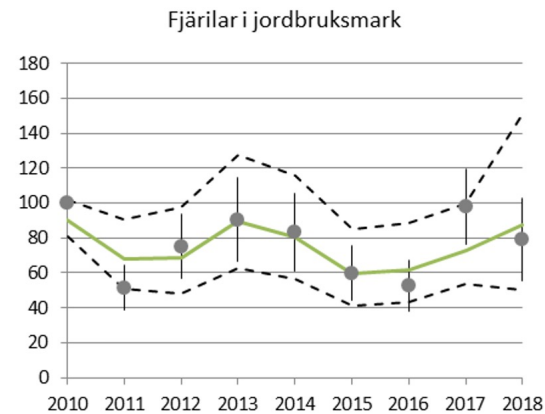


Analysen anpassas till valfri nivå & precisering

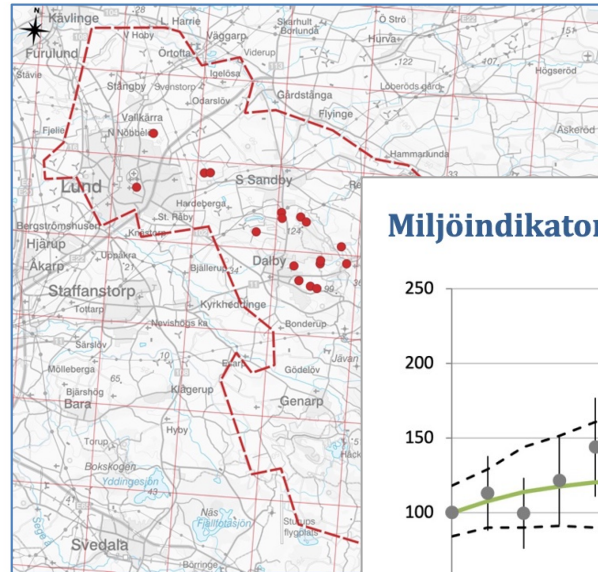
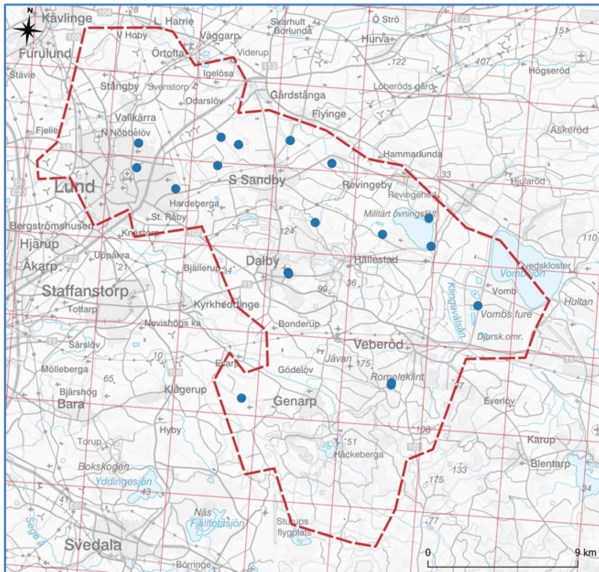


Västmanland 2009-2018

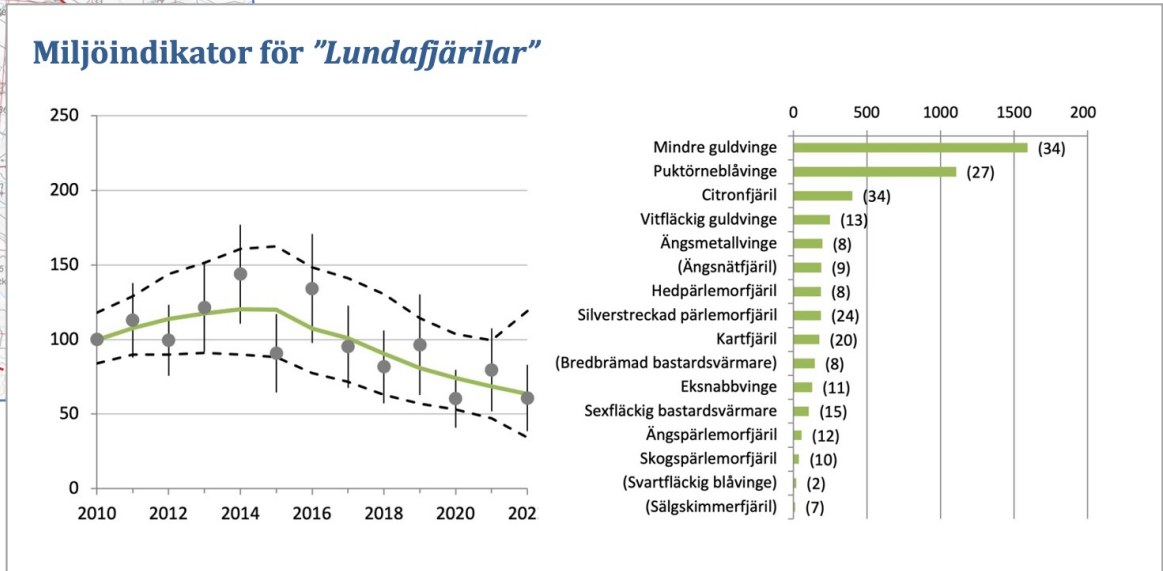
Miljöindikator för fjärilar i jordbruksmark



Analysen anpassas till valfri nivå & precisering



Lunds kommun 2010-2022



Möjligt att skraddarsy

- Datavärdskap Lunds universitet
 - » Svensk Dagfjärilsövervakning
 - » Svensk Fågeltaxering

